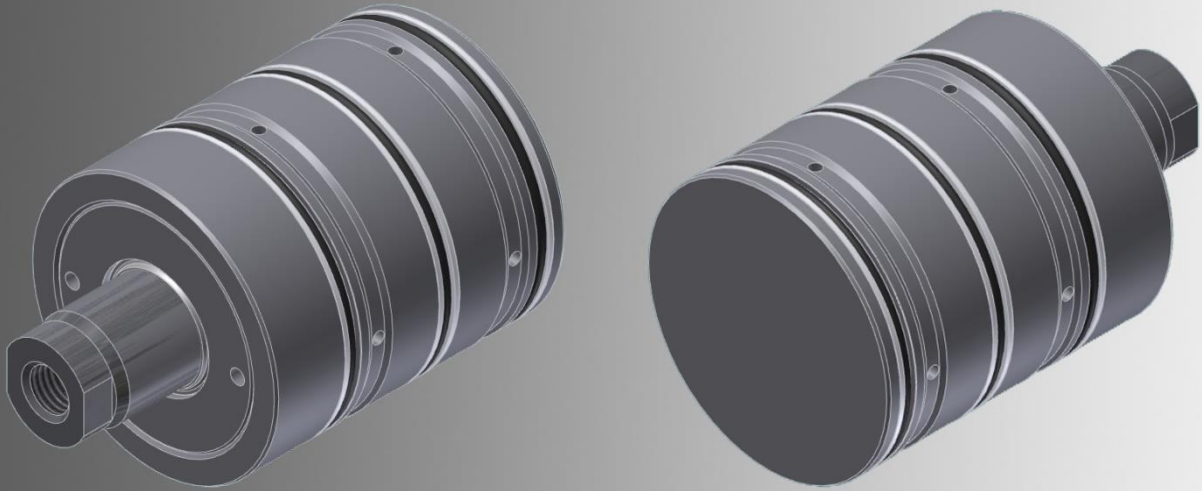


Hydraulic Insertion Cylinder



Due to the requirement to implement constantly increasing working spaces in combination with a smaller footprint of a machine, all drive elements must be designed as compact as possible in modern engineering.

In order to obtain the desired function, the correct positioning of the driving elements is critical, which often is structurally difficult or impossible.

In this case, the Hydropneu insertion cylinder could be the solution.

This cylinder type with double-acting function is inserted into precisely manufactured holes without additional piping to save space.

The oil supply takes place through drilled channels in the fixture body. Another screw connection is not required due to the sealing between the cylinder housing and the mounting space, and the hydraulic drive can be placed anywhere within a massive substrate. Overall, this results in very compact installation dimensions.

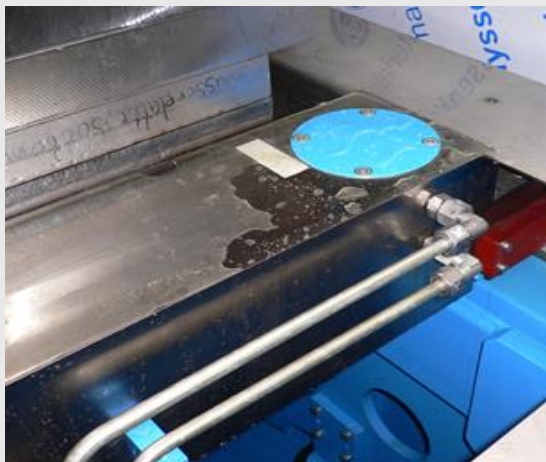
Working spaces remain optimally accessible since no external piping is necessary, and damage is eliminated.

Elegant and clearly designed technical solutions can thus be realized through the use of the Hydropneu insertion cylinder.



Precision in Motion

Hydraulic Insertion Cylinder



- ▶ Small installation dimensions
- ▶ Simple fast assembly
- ▶ Optimal placement
- ▶ Elegant solution
- ▶ Flush installation possible

Example:

We supplied one of our customers, who wasn't able to use a normal hydraulic cylinder in a hydroforming machine due to the lack of space, with a insertion cylinder. The placement was desired within a massive table bed, and the cylinder could not stick out into the working space because this would have hampered the cleaning and the assembly.

Technical Data:

Insertion Cylinder – RBZ.001.05.2.0-063-032-0030-0358	
Piston-Ø:	63 mm
Piston Rod-Ø	32 mm
Stroke:	30 mm +1 mm
Operating Pressure:	250 bar
Test Pressure:	375 bar
Operating Mode:	double-acting
End Position Cushioning:	none
Max. Piston Speed:	max. 0,5 m/s
Operating Fluid:	Hydraulic Oil HLP 46
Special Features:	<ul style="list-style-type: none">• Hardened and polished piston rod• Metallic wiper for special protection of the piston rod seal